

WATER PROBIOTECH

PNA001BB



Probiotic and Natural SOLUTION against silting up in fish and shrimp ponds

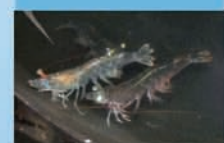
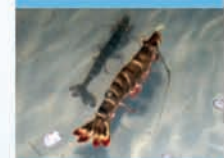
PROPERTIES

- **WATER PROBIOTECH** is a balanced mix of specific bacteria fixed on a bio-filtering support selected for its high specific surface. This natural substrate provides bacteria with a suitable environment in which to develop their natural capacities for reducing organic waste and detrimental pollutants.
- These bacteria are selected according to their enzymatic properties (lypolytic, proteolytic and cellulolytic activities) and their aptitude to metabolize phenol derivatives. **WATER PROBIOTECH** contains a high concentration of viable micro-organisms able to produce large quantities of enzymes.
- **WATER PROBIOTECH** allows :
 - Digestion of organic silt and reduction of chemical oxygen demand.
 - Metabolic transformation of N-compounds (ammoniac, nitrites and nitrates) and P elements into salts.
 - Regulation of bacterial populations with reduction of pathogenic bacteria populations.
 - Reduction in vibrioses,
 - Increased performance : growth and survival
 - Reduced veterinary costs.

COMPOSITION

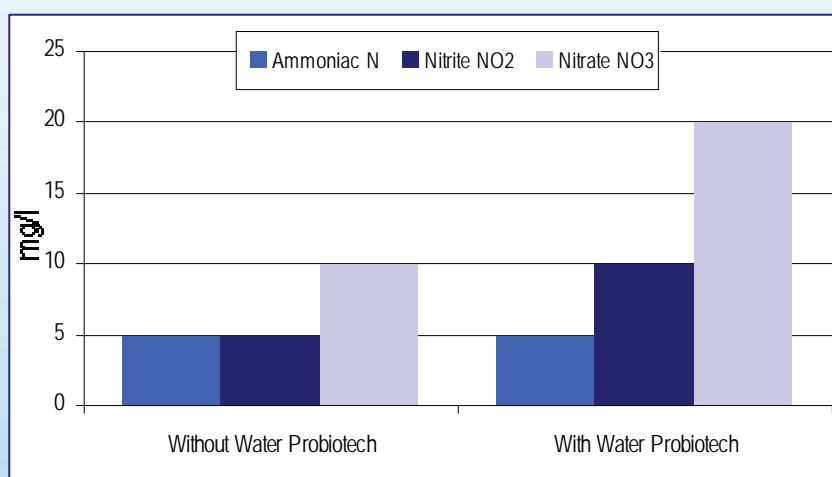
- ✓ Micro organisms: *Bacillus subtilis*, *Pseudomonas putida*, *Bacillus licheniformis*, *Bacillus pumilus*, *Lactobacillus plantarum*, *Pediococcus acidilactici*, *Nitrobacter spp.*, *Nitrosomonas spp.*, *Saccharomyces cerevisiae*, (Number of cells guaranteed : > 1.10⁹/g).
- ✓ Mineral and trace elements.
- ✓ Natural biofiltering substrate.





EXPERIMENTAL RESULTS

- The **WATER PROBIOTECH** effect was evaluated with sediments from aquaculture ponds.
- Higher degradation of organic nitrogen converted into ammoniac and then into nitrite and nitrate was observed with the use of **WATER PROBIOTECH**.
- These results show that **WATER PROBIOTECH IMPROVES** decomposition of organic matter into usable minerals for the phytoplankton.



Initial conditions : NH_3 : 200 mg/L ; NO_2 : 0 mg/L ; NO_3 : 0 mg/L

USE AND PRESENTATION

For use in ponds :

- As a preventive measure; recommended dosage (2 applications per month) :
 - 200 g per application and per 1000 m³ for a shrimp or fish biomass of 200 kg (the dosage should increase with an increase in biomass/1000m³).
- In difficult cases of organic pollution: recommended dosage as a curative measure: 4 kg per 1000 m³.

For use in hatcheries :

- Recommended dosage: 10 g / m³ / per day (preventive).
- **WATER PROBIOTECH** is presented in powder form and should be stored in a cool dry place.
- Application: Mix 500 g per 100 litres of tap or pond water. Incubate for 12 hours before use in pond.